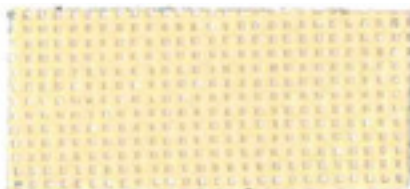


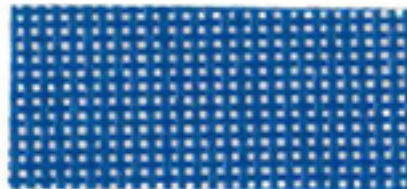
POOL MESH • TYPE W50/50/0690 (M5509)

LIST OF PROPERTIES		W50/50/0690
MATERIAL COMPOSITION		
FABRIC		100 % PES / 1100 DTEX
BINDING		1/1
WEIGHT	DIN EN ISO 2286/2 1998	250 [+,-10] G/M ²
CONSTRUCTION WARP		5 [+,-0,5] THR/CM
CONSTRUCTION WEFT		5 [+,-0,5] THR/CM
FABRIC WEIGHT	DIN EN ISO 2286/2 1998	120 G/M ²
COATING WEIGHT	DIN EN ISO 2286/2 1998	130 G/M ²
TENSILE STRENGTH WARP	EN ISO 1421/1 1998	>= 1600 N / 5CM
TENSILE STRENGTH WEFT	EN ISO 1421/1 1998	>= 1600 N / 5CM
TENSILE STRENGTH ELONGATION WARP	EN ISO 1421/1 1998	>= 20 %
TENSILE STRENGTH ELONGATION WEFT	EN ISO 1421/1 1998	>= 20 %
SHRINKAGE AT 200°C / 10 MIN. WARP	DIN 53354 1981	<= 3,5 %
SHRINKAGE AT 200°C / 10 MIN. WEFT	DIN 53354 1981	<= 2,5 %
THICKNESS	DIN 5084	0,60 MM
TEMPERATURE RESISTANCE	DIN EN 1876/2 1998	-30/+70 °C
LIGHT FASTNESS (EXCEPT WHITE)	ISO 105 B02 1988	6 - 8
FIRE BEHAVIOUR	ISO 3795 1989	< 100 MM/MIN

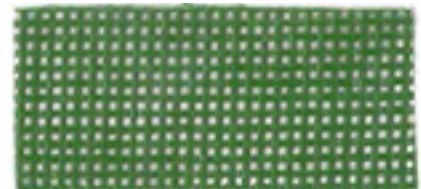
All our technical characteristics are indicative.



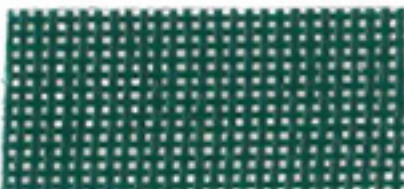
1399 – 210 / 320 CM



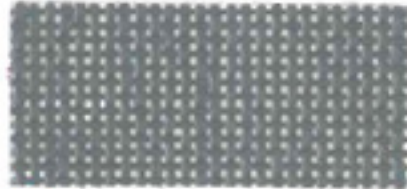
5601 – 210 CM



6601 – 210 / 320 CM



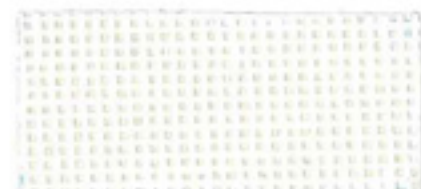
6602 – 210 CM



7601 – 210 CM



7999 – 210 / 320 CM



9917 – 210 CM