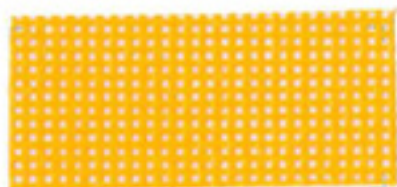


# SPORT MESH • W50/50/0690 (M5509)

| LIST OF PROPERTIES                |                        | W50/50/0690                |
|-----------------------------------|------------------------|----------------------------|
| <b>MATERIAL COMPOSITION</b>       |                        |                            |
| FABRIC                            |                        | 100 % PES / 1 100 DTEX     |
| BINDING                           |                        | 1/1                        |
| WEIGHT                            | DIN EN ISO 2286/2 1998 | 250 [+10] G/M <sup>2</sup> |
| CONSTRUCTION WARP                 |                        | 5 [+0,5] THR/CM            |
| CONSTRUCTION WEFT                 |                        | 5 [+0,5] THR/CM            |
| FABRIC WEIGHT                     | DIN EN ISO 2286/2 1998 | 120 G/M <sup>2</sup>       |
| COATING WEIGHT                    | DIN EN ISO 2286/2 1998 | 130 G/M <sup>2</sup>       |
| TENSILE STRENGTH WARP             | EN ISO 1421/1 1998     | >= 1600 N / 5 CM           |
| TENSILE STRENGTH WEFT             | EN ISO 1421/1 1998     | >= 1600 N / 5 CM           |
| TENSILE STRENGTH ELONGATION WARP  | EN ISO 1421/1 1998     | >= 20 %                    |
| TENSILE STRENGTH ELONGATION WEFT  | EN ISO 1421/1 1998     | >= 20 %                    |
| SHRINKAGE AT 200°C / 10 MIN. WARP | DIN 53354 1981         | <= 3,5 %                   |
| SHRINKAGE AT 200°C / 10 MIN. WEFT | DIN 53354 1981         | <= 2,5 %                   |
| THICKNESS                         | DIN 5084               | 0,60 MM                    |
| TEMPERATURE RESISTANCE            | DIN EN 1876/2 1998     | -30/+70 °C                 |
| LIGHT FASTNESS (EXCEPT WHITE)     | ISO 105 B02 1988       | 6 - 8                      |
| FIRE BEHAVIOUR                    | ISO 3795 1989          | < 100 MM/MIN               |
| APPLICATION                       |                        | MESH                       |

All our technical characteristics are indicative.



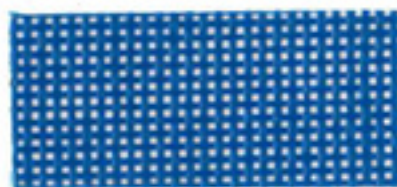
1398 - 210 CM



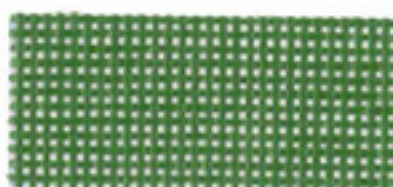
1399 - 210 / 250 CM



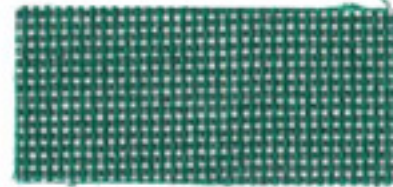
3130 - 210 CM



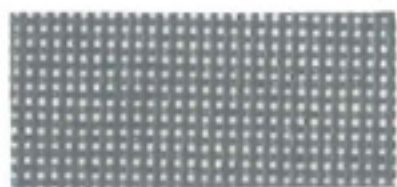
5601 - 210 CM



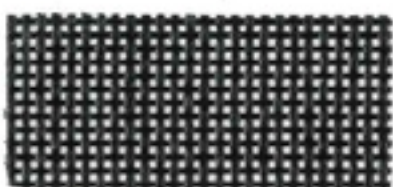
6601 - 210 / 250 CM



6602 - 210 CM



7601 - 210 CM



7999 - 210 / 250 CM



8601 - 210 CM



9917 - 210 CM